

Cancelled
Figure 1

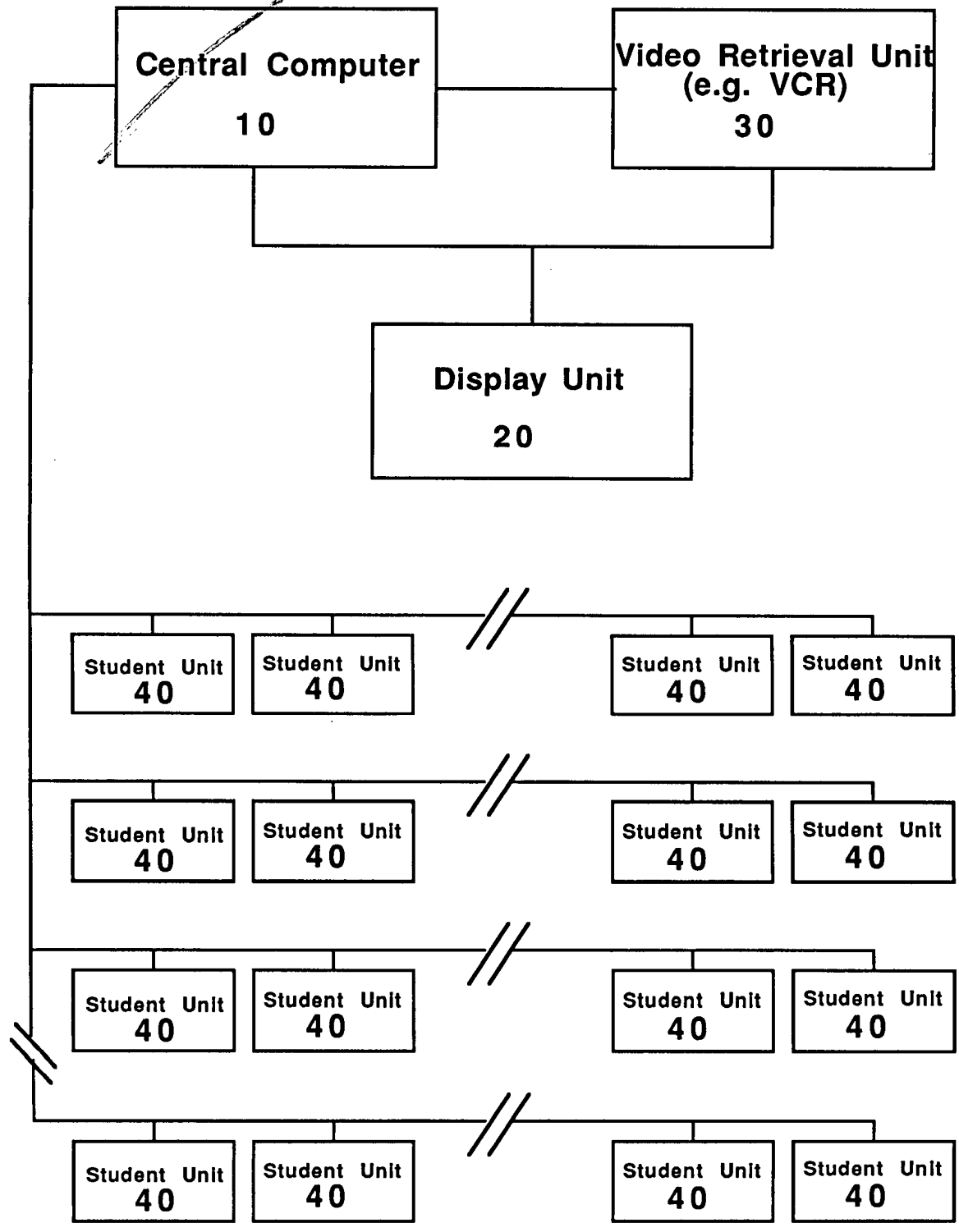


Figure 2A

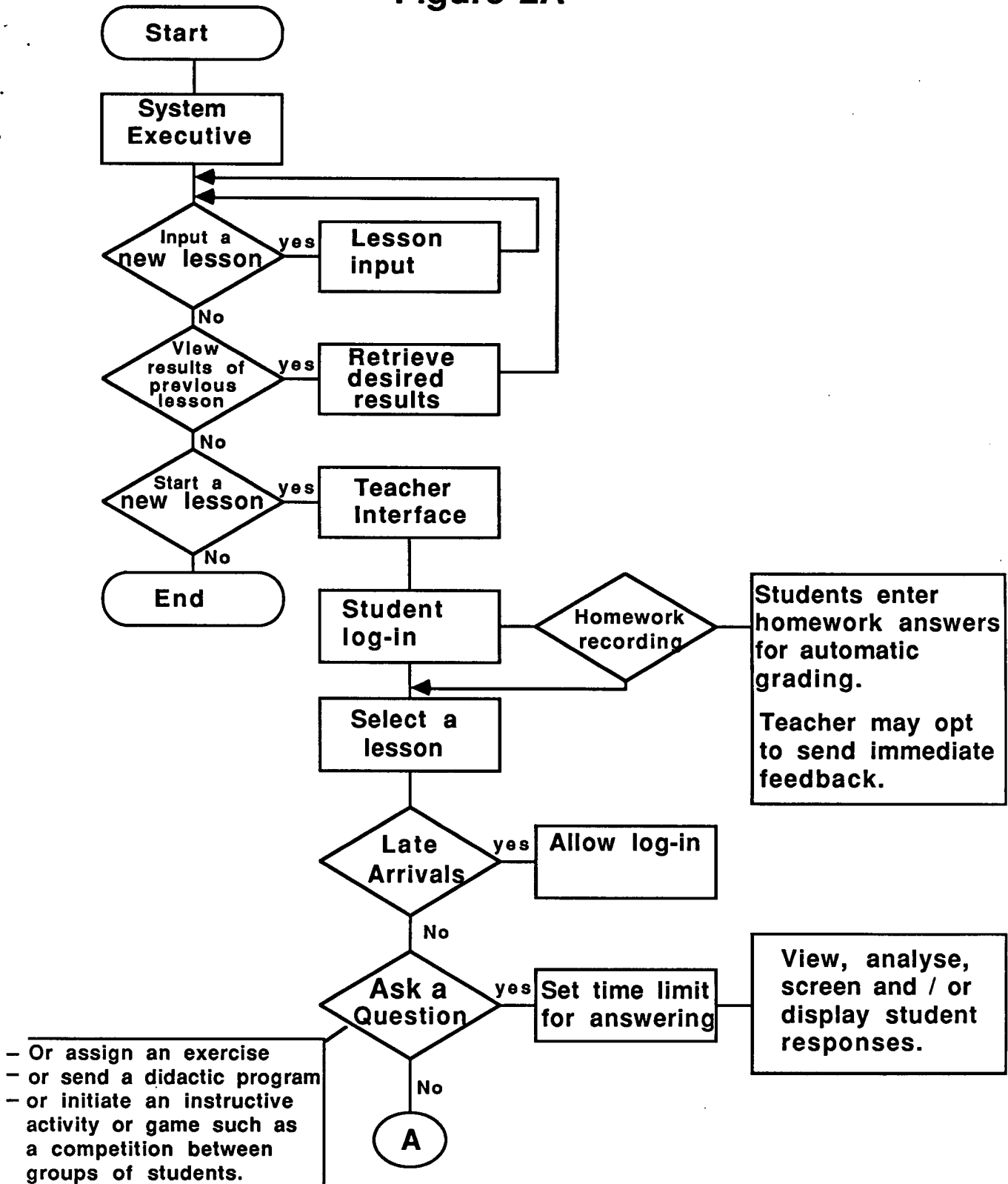
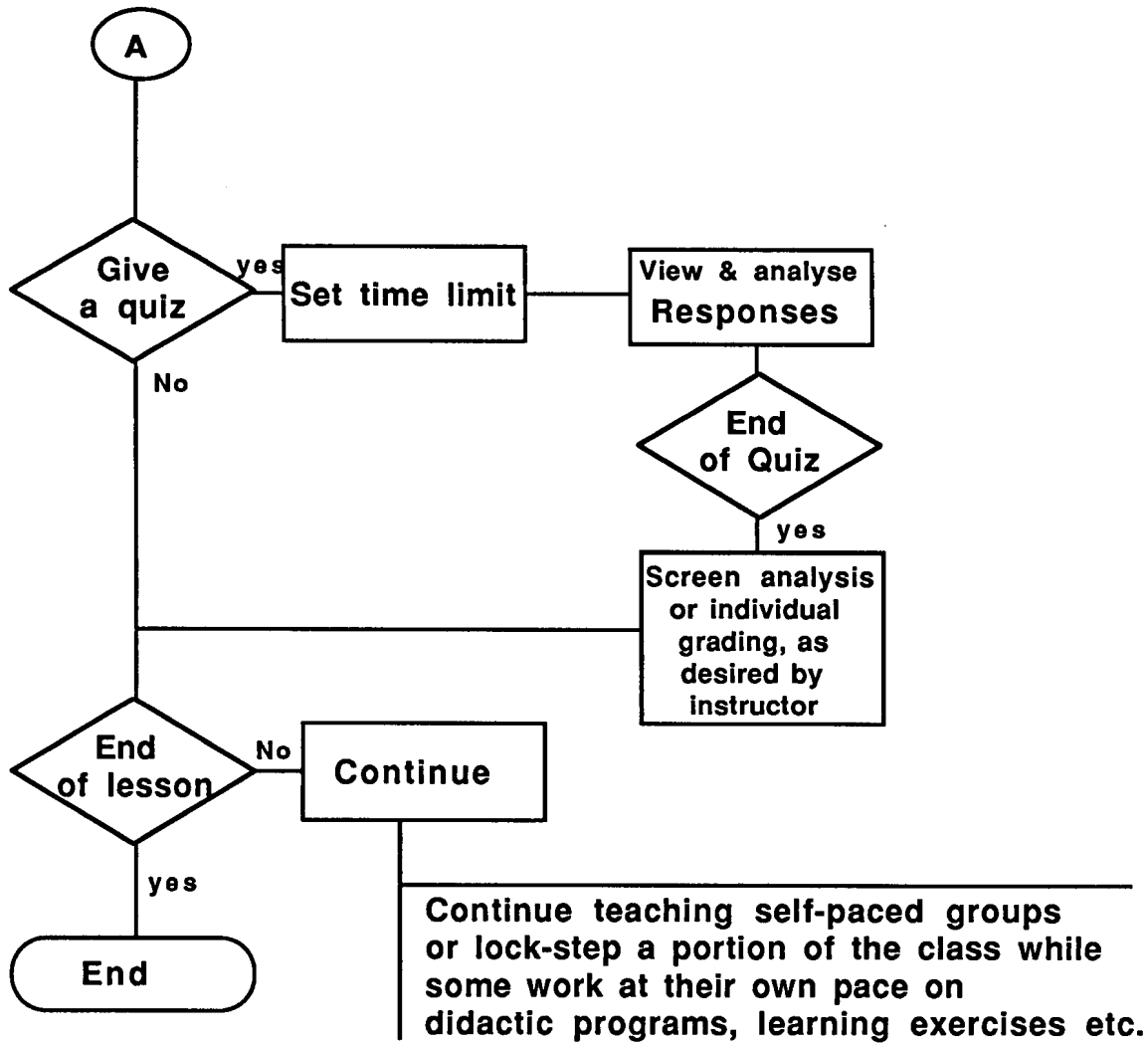
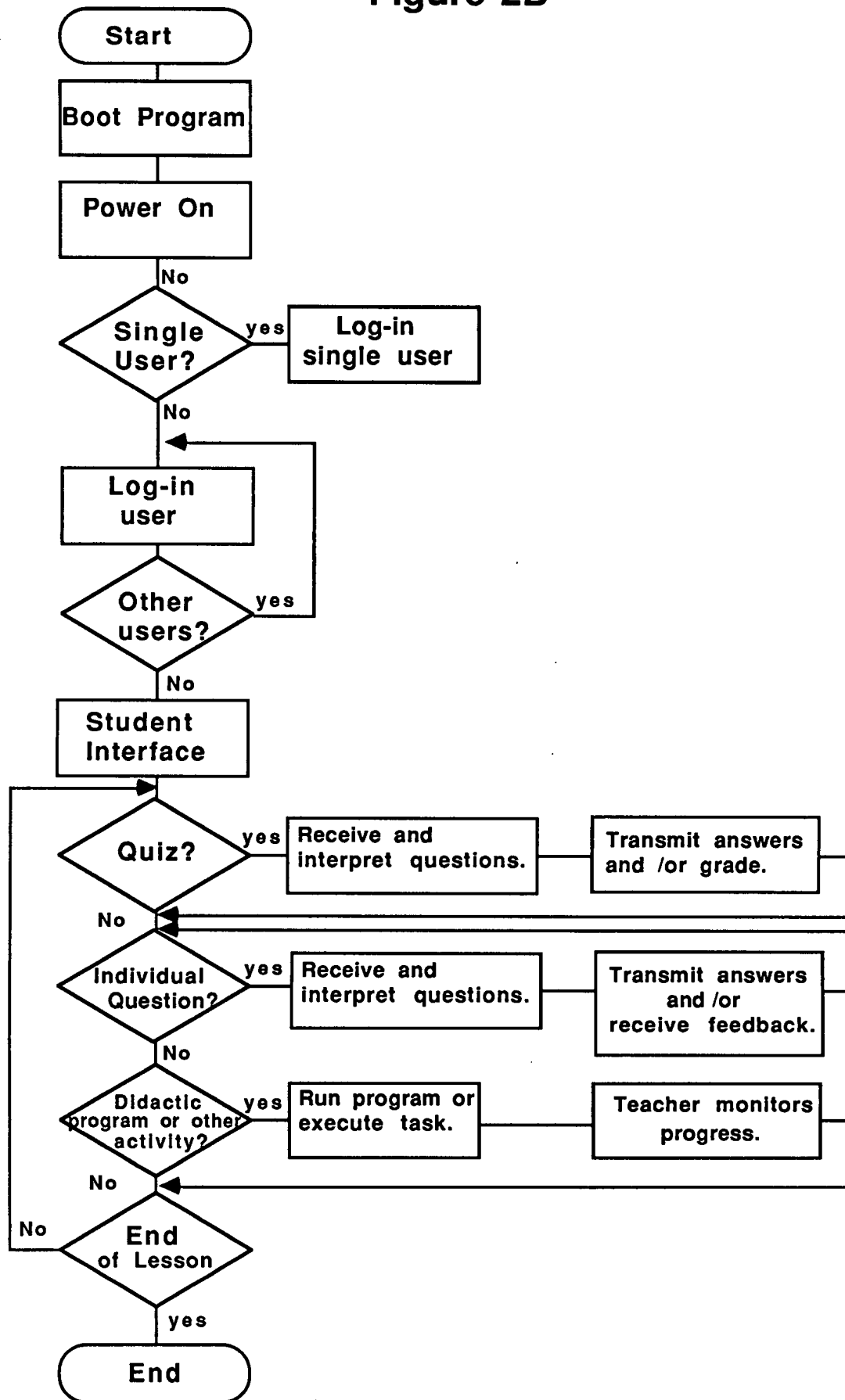


Figure 2A (cont'd)



-
-
-

Figure 2B



Classtalk 1.5 Flow Chart

07/344627

5-14

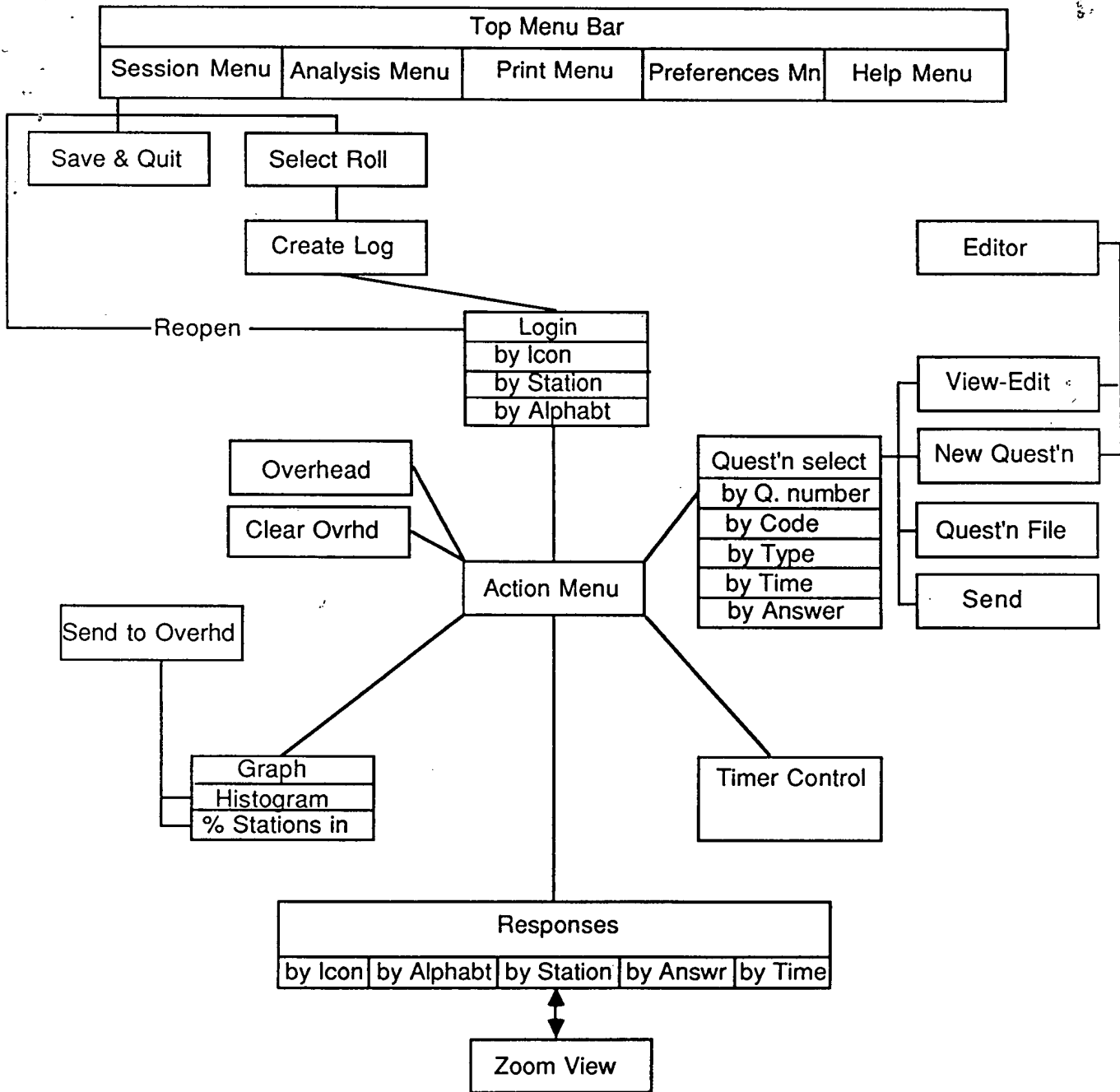


FIGURE 3A

Classtalk 1.5 - Typical Session Flow

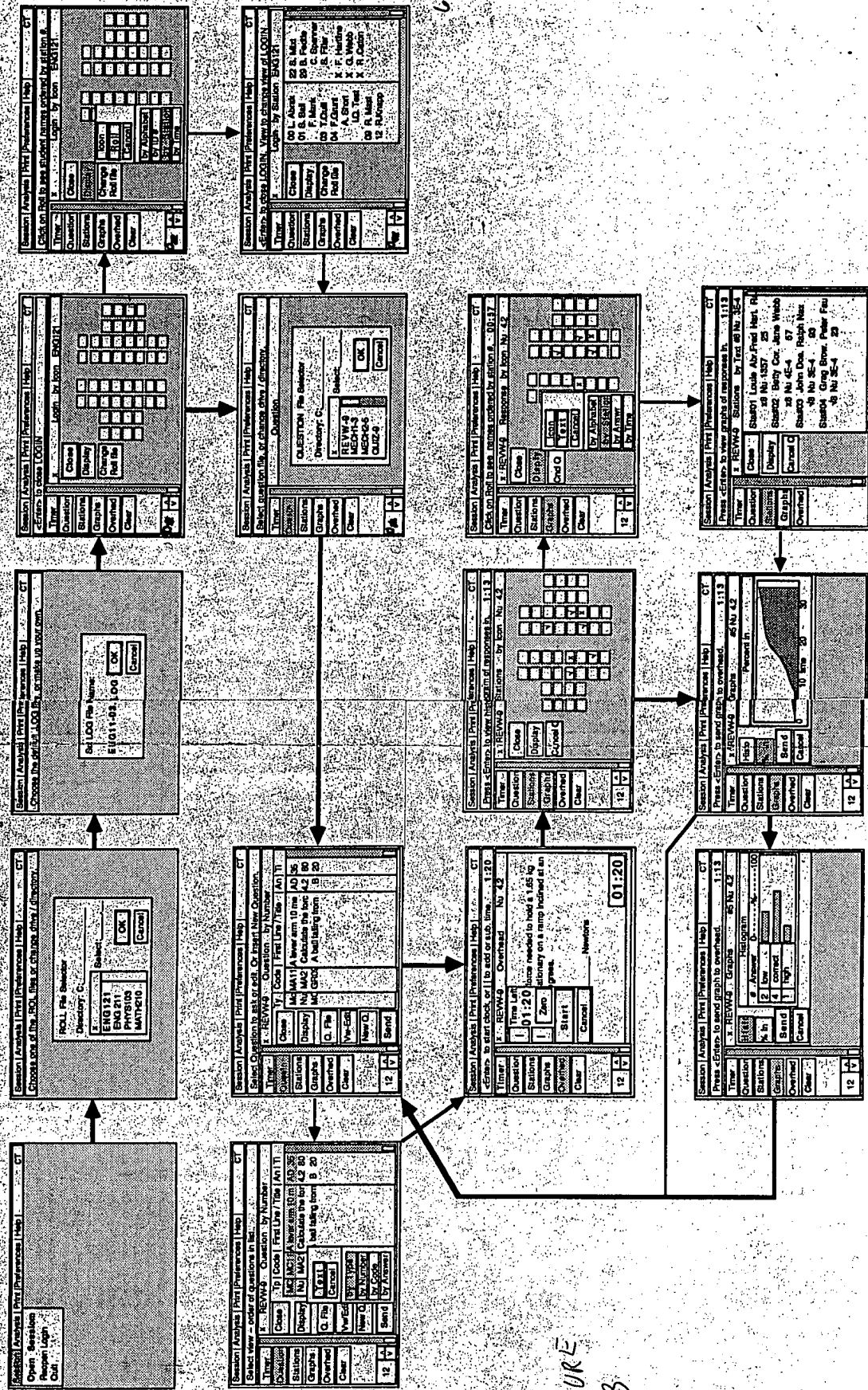
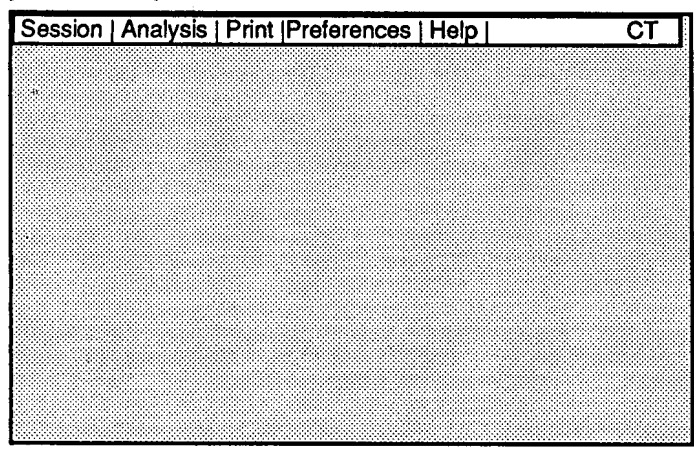


FIGURE 3B

4.2

FIG. 4A



8-14
FIG. 4E

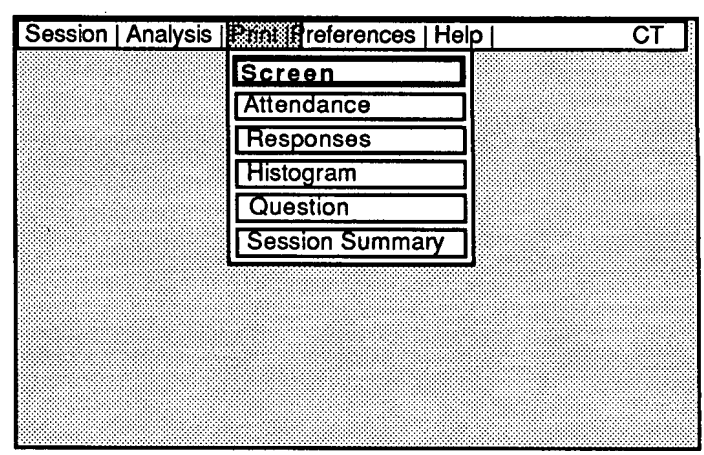


FIG. 4B

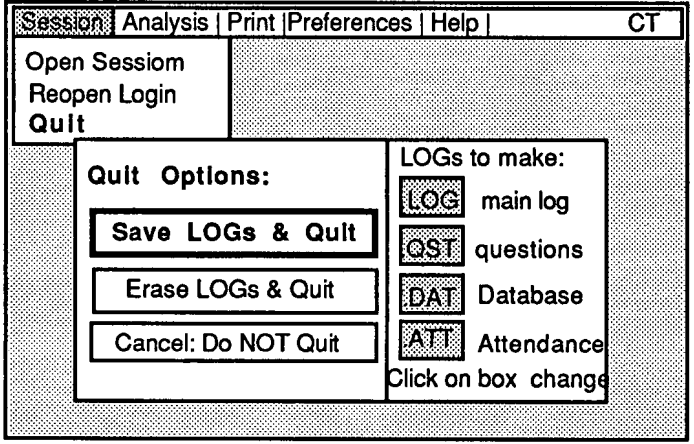


FIG. 4C

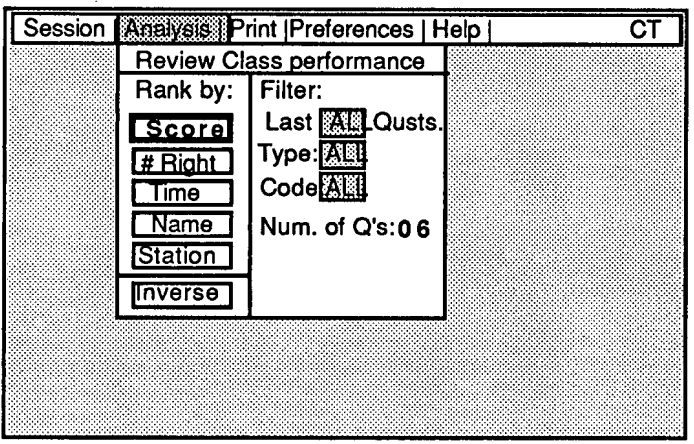
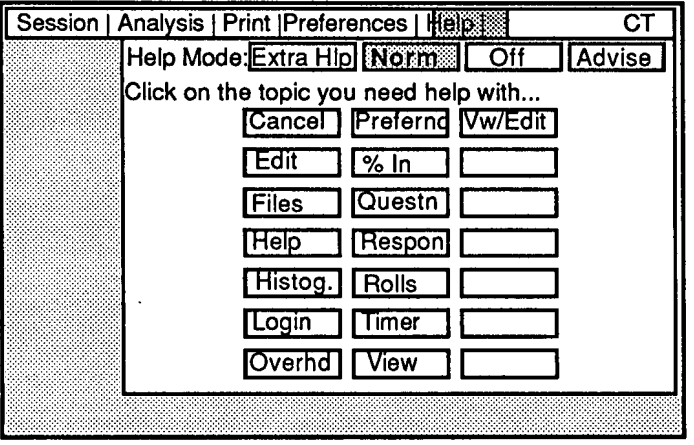


FIG. 4D



4.4

FIG. 4F

Session | Analysis | Print | Preferences | Help | CT

Execution/Cycle:
 Drive/Path :
 Editor :
 Logs:
 Graphs:
 Window Size/ Loc
 Station Layout

FIG. 4G

Session | Analysis | Print | Preferences | Help | CT

Drive/Path Specifics:

File: Drive\Path
 .ROL CAC\ROL
 .QST CAC\QST
 .LOG CAC\LOG

Accept Cancel

FIG. 4H

Session | Analysis | Print | Preferences | Help | CT

x Execution / Cycle

Auto Execution:
 On Off Quiz

Use Cycle
 Prev. Sequ

Cycle: CDT SH10

Q=Q.Select S=Stations.
 D=display question on Ovhd
 G=Graphs C=Clear Ovhd
 E=Vw/Edit T=Timer
 10=pause 10 sec.

Accept Cancel

FIG. 4I

Session | Analysis | Print | Preferences | Help | CT

Editor Preferences:

Overwrite Insert

Defaults:
 Type: V C Time: 30
 Code M X Answer A B C

Accept Cancel

10-14
FIG.

FIG.
4
J

Session | Analysis | Print | Preferences | Help | CT

Open Sesslom
Reopen Login
Quit

Session | Analysis | Print | Preferences | Help | CT

Click on Roll to see student names ordered by station #.

Timer x Login by Icon ENG121

Question Close

Stations Display

Graphs Change Roll file

Overhead Icon

Clear Roll

Cancel

by Alphabet

by ID #

by Station

by Time

FIG.
4
N

FIG.
4
K

Session | Analysis | Print | Preferences | Help | CT

Choose one of the .ROL files or change drive / directory.

ROLL File Selector

Directory: C: _____

x Select: _____

ENG121

ENG 211

PHYS103

MATH210

OK

Cancel

Session | Analysis | Print | Preferences | Help | CT

<Enter> to close LOGIN, View to change view of LOGIN

Timer x Login by Station ENG121

Question Close

Stations Display

Graphs Change Roll file

Overhead

Clear

00 L. Abrak

01 S. Ball F. Mank

03 T.Quill B.Long

04 F.Grunt A. Short I.Q. Test

09 R. Mast

12 R.Knapp

23 Alan Atkins

FIG.
4
O

FIG.
4
L

Session | Analysis | Print | Preferences | Help | CT

Choose the default .LOG file, or make up your own.

Set LOG File Name:

ENG11-03.LOG

OK

Cancel

Session | Analysis | Print | Preferences | Help | CT

<Enter> to close LOGIN, View to change view of LOGIN

Timer x Login by Alphabt ENG121

Question Close

Stations Display

Graphs Change Roll file

Overhead

Clear

00 L. Abrak 8236

23 Alan Atkins 9345

01 S. Ball 7360

F. Brinker 4581

04 F.Grunt 5216

12 R.Knapp 2316

Tom King 3862

03 B.Long 5592

01 F. Mank 4083

09 R. Mast 8437

03 T.Quill 3392

04 A. Short 6179

FIG.
4
M

Session | Analysis | Print | Preferences | Help | CT

<Enter> to close LOGIN

Timer x Login by Icon ENG121

Question Close

Stations Display

Graphs Change Roll file

Overhead

Clear

Session | Analysis | Print | Preferences | Help | CT

Select question file, or change drive / directory.

Question

QUESTION File Selector

Directory: C: _____

x Select: _____

REVW-9

MECH1-3

MECH2-5

QUIZ-9

OK

Cancel

FIG.
4
P

Session | Analysis | Print | Preferences | Help | CT

Select view -- order of questions in list..

Timer x REVW-9 Question by Number

Question	Close	TP	Code	First Line / Title	An Ti
Stations	Display	MC	MC11	A lever arm 10 m	AD 35
Graphs		Nu	MA21	Calculate the for	4.2 80
Overhead	Q. File	MC	GR09	A ball falling from	B 20

Clear Vw/Edit New Q. Send

FIG.
4Q

Session | Analysis | Print | Preferences | Help | CT

Select view -- order of questions in list..

Timer x REVW-9 Question by Number

Question	Close	TP	Code	First Line / Title	An Ti
Stations	Display	MC	MC11	A lever arm 10 m	AD 35
Graphs		Nu	MA21	Calculate the for	4.2 80
Overhead	Q. File			A ball falling from	B 20

Clear Vw/Edit New Q. Send

Text Cancel
by Type
by Number
by Code
by Answer

FIG.
4R

Session | Analysis | Print | Preferences | Help | CT

<Enter> to start clock, or | | to add or sub. time. 1 : 20

Timer x REVW-9 Overhead Nu 4.2

Question Time Left
01:20 force needed to hold a 1.65 kg
Stations | Zero stationary on a ramp inclined at an
Graphs | | degrees.

Overhead Start
Clear Cancel _____ Newtons

01:20

FIG.
4S

4.3

Session | Analysis | Print | Preferences | Help | CT

Press <Enter> to send this question to overhead. 1:13

Timer x View / Edit

Question Which of the following is the closest to the correct value for the acceleration of gravity? Question # 6

Stations Defaults:

Graphs Type: MC Time: 30

Overhead Code: MXX Answer: ABC

Clear A: 8.9 m/sec^2
B: 980 ft/sec^2
C: 9.8 m_

12 [A] [V]

Cancel Send

FIG. 4 T

Session | Analysis | Print | Preferences | Help | CT

<Enter> to start clock, or | to add or sub. time. 1:20

Timer x REVW-9 Overhead Se 3582761094

Question Put the names in chronological order:

Stations 1:Cavendish 6:Newton

Graphs 2:Kepler 7:Pascal

Overhead 3:Aristotle 8:Copernicus

Clear 4:Einstein 9:Faraday

5:Bacon 0:Gauss

Type the number of the oldest scientist first. Then the next oldest, etc. 02:00

12 [A] [V]

12-14 FIG. 4 X

Session | Analysis | Print | Preferences | Help | CT

<Enter> to start clock, or | to add or sub. time. 1:20

Timer x REVW-9 Overhead Nu 4.2

Question Calculate the force needed to hold a 1.65 kg block of ice stationary on a ramp inclined at an angle of 45 degrees.

Stations _____ Newtons

Graphs

Overhead

Clear

12 [A] [V]

01:20

FIG. 4 U

Session | Analysis | Print | Preferences | Help | CT

Press <Enter> to view histogram of responses in. 1:13

Timer x REVW-9 Stations by Icon Nu 4.2

Question Close

Stations Display

Graphs Cancel Q

Overhead

Clear

12 [A] [V]

FIG. 4 Y

Session | Analysis | Print | Preferences | Help | CT

<Enter> to start clock, or | to add or sub. time. 1:20

Timer x REVW-9 Overhead Gr 3.2

Question Specify the grid coordinates for the best location for house on the specified lot. H.V

Stations

Graphs

Overhead

Clear

12 [A] [V]

00:20

FIG. 4 V

Session | Analysis | Print | Preferences | Help | CT

Click on Roll to see names ordered by station #. 00:57

Timer x REVW-9 Response by Icon Nu 4.2

Question Close

Stations Display

Graphs Icon

Overhead Text

Clear Cncl Q

by Alphabet

by Station

by Answer

by Time

12 [A] [V]

FIG. 4 Z

Session | Analysis | Print | Preferences | Help | CT

<Enter> to start clock, or | to add or sub. time. 1:20

Timer x REVW-9 Overhead Tx

Question List several of the famous Greek thinkers linking each to his or her most important contribution to philosophy or science.

Stations

Graphs

Overhead

Clear

12 [A] [V]

05:00

Maximum 20 words
One sentence per Greek

FIG. 4 W

FIG. 4 A

Session | Analysis | Print | Preferences | Help | CT

Press <Enter> to view graphs of responses in. 1:13

x REVW-9 Stations by Text #8 Nu 3E-4

Timer

Question Close Sta#01 Louie Abr.Fred Hart. R
x8 Nu 1357 25

Stations Display Sta#02 Betty Cor. Jane Webb
x8 Nu 4E-4 57

Graphs Cancel Q Sta#03 John Doe. Ralph Nex
√8 Nu 3E-4 93

Overhed Sta#04 Greg Brow. Peter Fau
√8 Nu 3E-4 23

13-14
FIG. 4 EE

Session | Analysis | Print | Preferences | Help | CT

Press <Enter> to send graph to overhead. 1:13

x REVW-9 Graphs #5 Nu 4.2

Timer

Question Histo Histogram

Stations % In

Graphs

Overhed

Clear

#	Answer	0-----%-----100
2	low	
4	correct	
1	high	

Send

Cancel

FIG. 4 BB

Session | Analysis | Print | Preferences | Help | CT

Press <Enter> to view histogram of responses in. 1:13

x REVW-9 Stations by Icon Nu 4.2

Timer

Question Close

Stations Display

Graphs Cancel Q

Overhed

Clear

x zoom

Sta#33 Louie Abr
Fred Hart Robrt Kna
A
√ Mc Ti:25 S:5.3

FIG. 4 DD

Session | Analysis | Print | Preferences | Help | CT

Press <Enter> to send graph to overhead. 1:13

x REVW-9 Graphs #5 Nu 4.2

Timer

Question Histo Percent in

Stations % In

Graphs

Overhed

Clear

Send

Cancel

FIG. 4 CC

Session | Analysis | Print | Preferences | Help | CT

Press <Enter> to view graphs of responses in. 1:13

x REVW-9 Stations by Icon #5 Nu 4.2

Timer

Question Close

Stations Display

Graphs Cancel Q

Overhed

Number out of Order

Histogram of Class Response

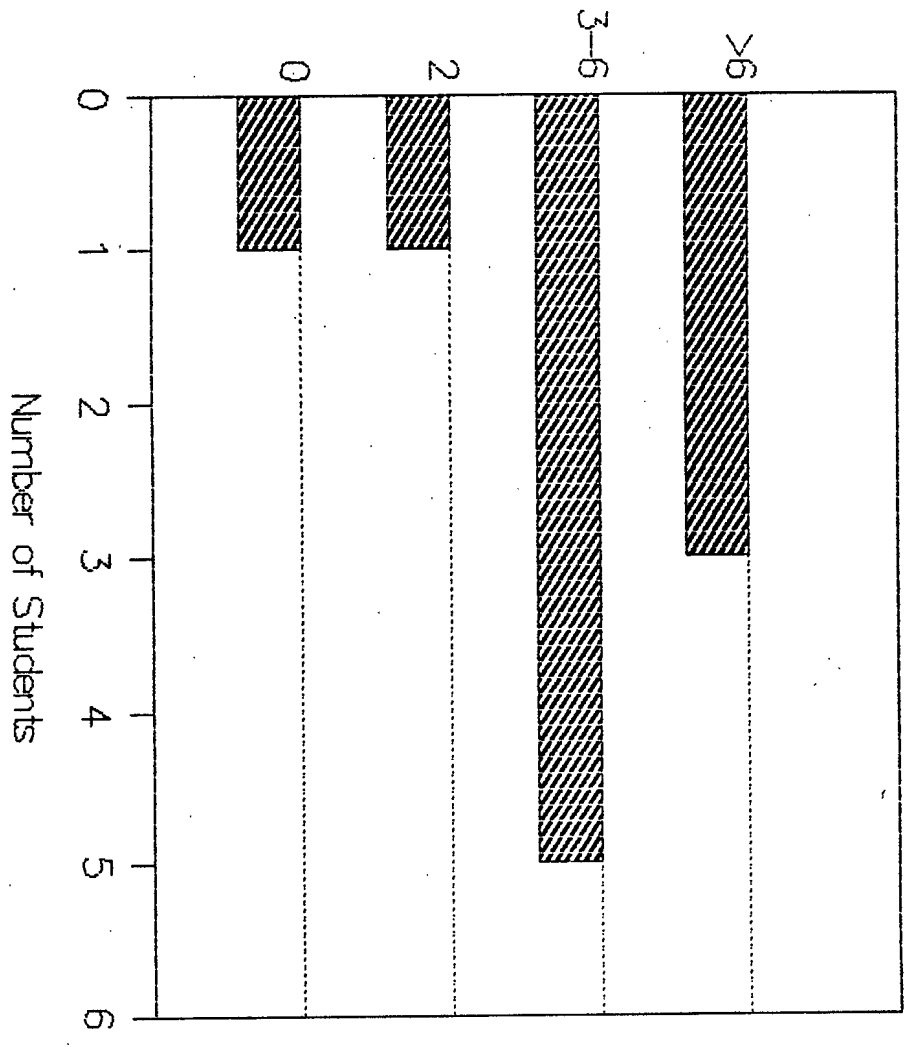


FIGURE 5A

Combined Class Response to Sequence Question

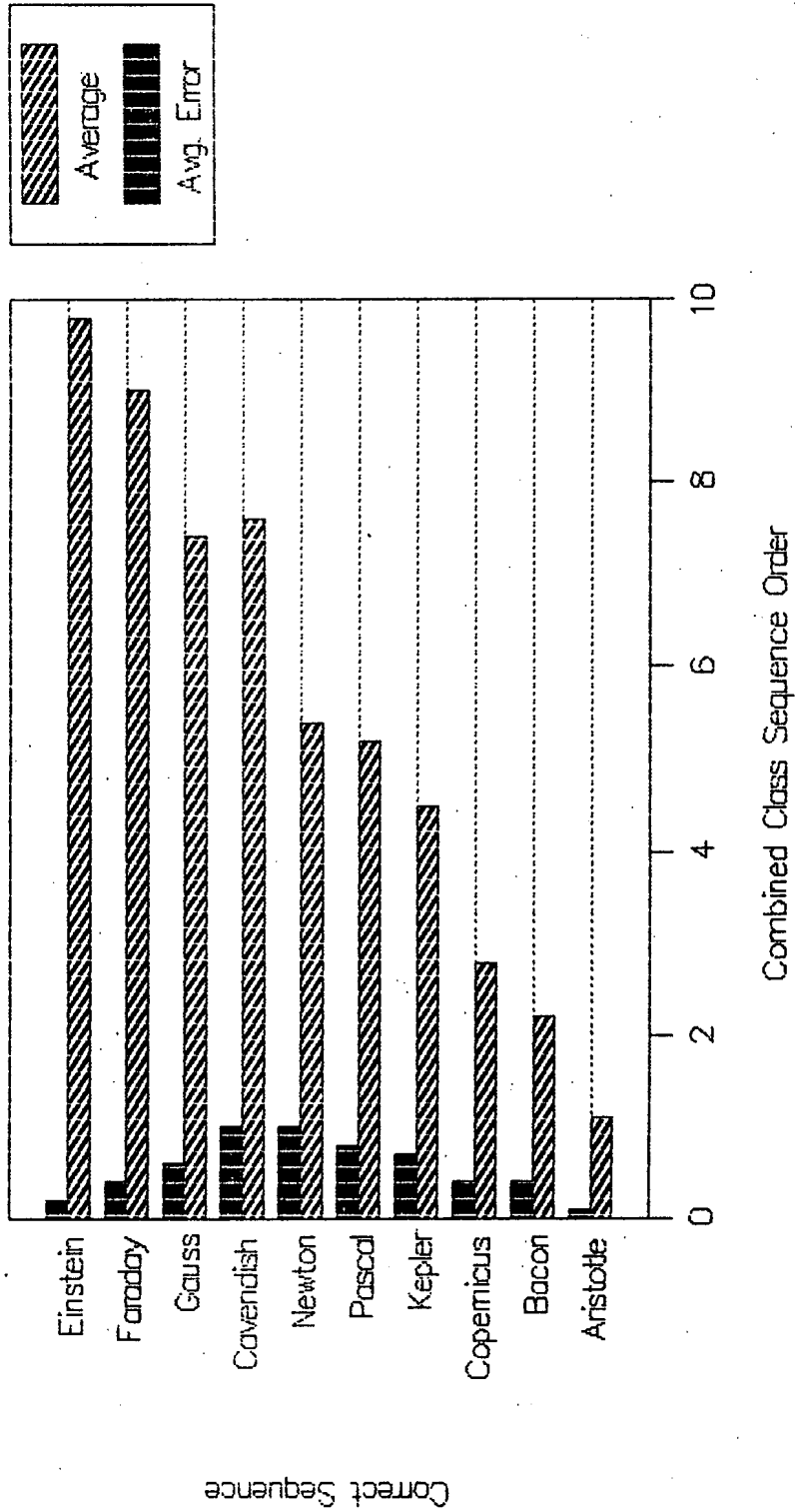


FIGURE 5B